



PRIMAE

Technology Capability Map PRIMAE

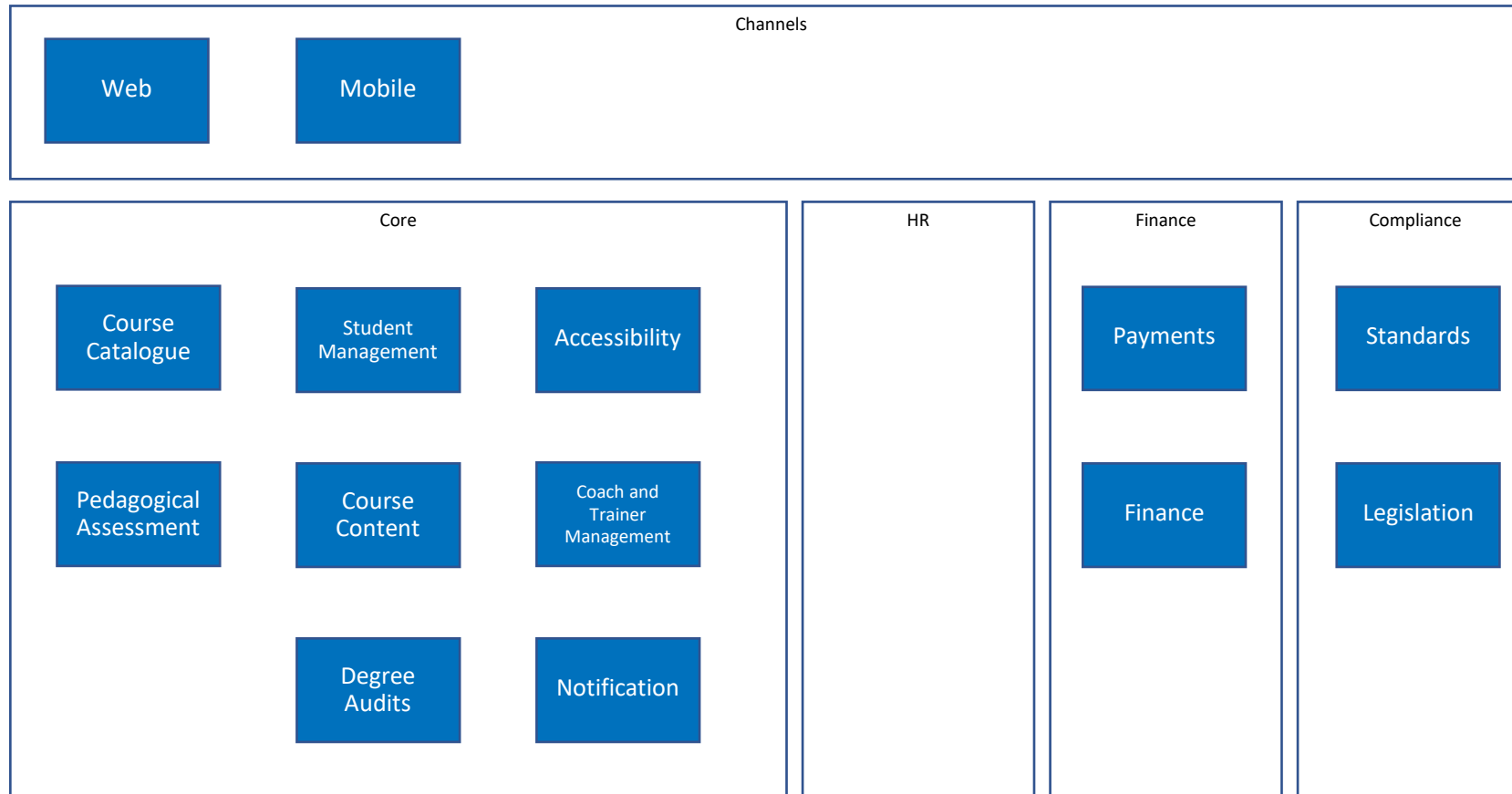


Co-Funded by the
Erasmus+
Programme of the
European Union

Contents

- Technology Capability Map
- Capability Description
- Design Principles

Technology Capability Map



Capability Description - Web

- Online portal should have responsive content
- Content should be accessible
- Channel should be available globally
- Channel should be quick to access
- Content delivered through the channel should be available on low-bandwidth connections
- Rich content should be utilised to the extent possible and made available on high-bandwidth connections
- SEO should be applied to Channel

Capability Description - Mobile

- Content should be available natively. i.e HTML
- Apps should be created on a cross-device platform or for iOS and Android at least
- Devices should include tablets, accessible device components
- Accessibility for underlying platforms should be utilised
- Low-resolution content must be available separately

Capability Description – Course Catalogue

- Module-based approach
- Modules / Courses offered
 - At different levels (mapping, or number of courses for achievement)
 - Course description will contain
 - Syllabus
 - Duration
 - Mode of Learning
- Grading Mechanism (Pass Mark)

Capability Description – Pedagogical Assessment

- Courses offered
 - Automated Evaluation
 - MCQ, True / False
 - Teacher-based Evaluation
 - Content
- Repository of Questions
 - Mechanism to Review Question Base
 - Mechanism to set the difficulty
 - Describe attributes of the test
 - Effectiveness of Question
- Quizzes
- Assessment Workflow

Capability Description – Student Management

- Student Registration
 - Student Contact Details
- Student Modules Enrolled
 - Student Progress and Completion
- Student Assessment / Achievements
 - Grades
 - Achievements
 - Certificates
 - Diplomas

Capability Description – Course Content

- Structure of Course
 - Flexible but Structured in components
 - Components
 - Pre-assessment
 - Homework
 - Course
 - Personalisation
- Content
 - Visual Presentations
 - Videos
 - Encouraging Learning and Martial Arts
 - Languages (English, French, German, Italian, Greek, and Others)

Capability Description – Degree Audits

- Verification of Course / Diploma Certificate
- Acclaim or Acclaim style Badge

Capability Description – Accessibility

- WCAG 2.2 based
- Software selected should be compliant
- Accessibility test with the audience

Capability Description – Coach and Trainer Management

- Coach and Trainer Registration
 - Coach / Trainer Contact Details
- Coach / Trainer Bio
 - Coach Credentials

Capability Description – Notifications

- Newsletter with updates, initiatives
- Notifications to Students
 - Course Progress
 - Similar Courses
 - Assessment Status
- Notifications to Coaches / Trainers
 - Assessment Status
 - Student Progress and Other Student Courses

Capability Group - HR

- Coach / Trainer Outcomes
- Coach / Trainer Talent Development
- Coach / Trainer Recruitment
- Policies for engagement / teaching



Capability Description - Payments

- A payment gateway should be present
 - Currently Stripe is being used, this account should be incorporated
- Other types of payments
 - Banking Systems (UK, Europe)
 - In Person
 - Invoice to a charity

Capability Description - Finance

- A payment arrangement mechanism should be present
- This should allow students with
 - Scholarships
 - Charity Based Funding & Sponsorships
 - Loans
 - Pay Later plan
 - Instalment plan
- Post entries to accounting software, at the end of a cycle

Capability Description - Standards

- Accessibility Standard WCAG 2.2
- OWASP Standards - Security

Capability Description - Legislation

- Non-Profit Organisation Based
 - Charities Act
 - Equality Act
 - Code of Fundraising Practice
- Technology Based
 - Distance Selling Regulations
 - Web Accessibility Guidelines
 - Data Protection Act
 - GDPR
 - Consumer Contracts Regulation
 - Electronic Commerce Regulation
 - PCI DSS
 - E-Privacy Directive
 - Cookie Law

Designing Principles

- Accessibility by Design
- Secure by Design and Component

Legal Disclaimer

The project was funded by the European Union through the ERASMUS + programme. The European Commission support for the production of this publication does not constitute an endorsement of the contents which reflects the views only of the authors, and the Commission cannot be held responsible for any use which may be made of the information contained therein.